

EXTERIOR The former Salvation Army hall has been converted into a combined residence and multi-use commercial space, retaining the moniker Citadel. Exterior painted Dulux Lexicon Quarter.

CITADEL

FACE *value*

The realisation of a family's vision for a warm and eclectic home and working space has allowed this building's history to shine.

STORY *Judy Pascoe* | STYLING *Maryann Schmidt* | PHOTOGRAPHY *Tom Ferguson*



KITCHEN Joinery in Dulux Lexicon Quarter, Space Joinery. Calacatta Viola marble, Nefiko Marble. Five-metre island bench, Concrete Art by Luke. Whispair 'Monte Carlo 90' rangehood in blackened steel. Brodware 'Industria' mixer in Rumbled Organic Brass, Just Bathroomware. Farmhouse concrete sink, Schots. Grazia & Co 'Iva' stools. Custom pendants, Hunt & Design.

“It has lived many lifetimes and has many stories to tell.”

MARYANN SCHMIDT, INTERIOR DESIGNER

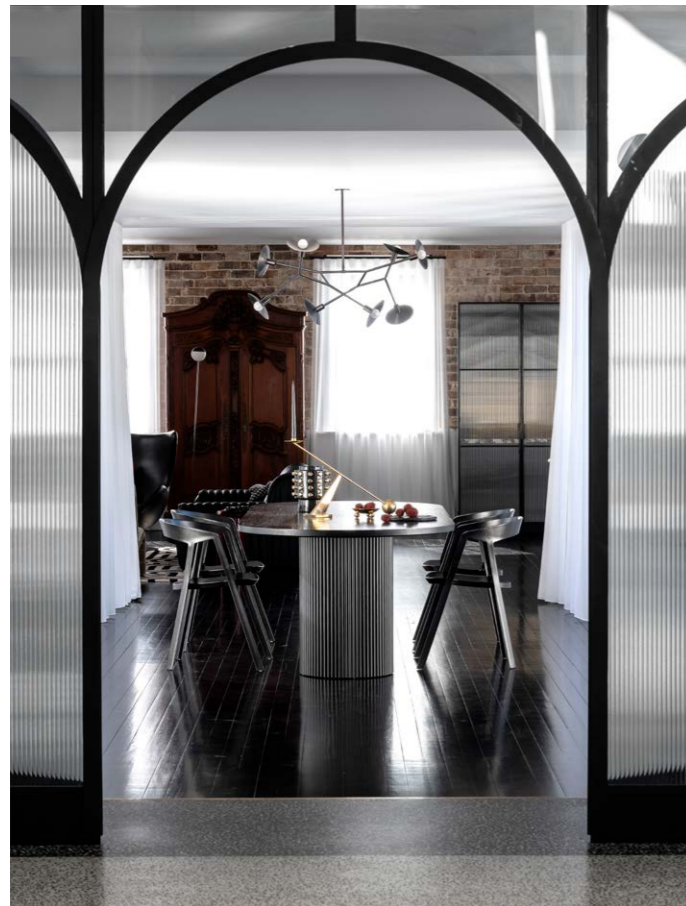
Turning a former Salvation Army hall and stables on Sydney’s Lower North Shore into a family home combined with commercial premises was a challenging brief for Maryann Schmidt, creative director of Hunt & Design. It was a challenge that she relished, however, and the resulting warm and eclectic home and its attendant slick co-working space is a triumph.

Maryann had been approached by her friend, Rowena Clarke, to help with the realisation of her family’s dream project. Attracted by the property’s facade, its history and the potential of the site, Rowena and partner, Anton Heckendorf, had a vision to create a home for themselves, their son, Baxter, seven, and dalmador, Oreo, as well as a commercial setting for their creative marketing business. When they bought the property it was in desperate need of an update but, after some minor work to make it liveable, the project stalled for five years as they faced many obstructions from the local council.

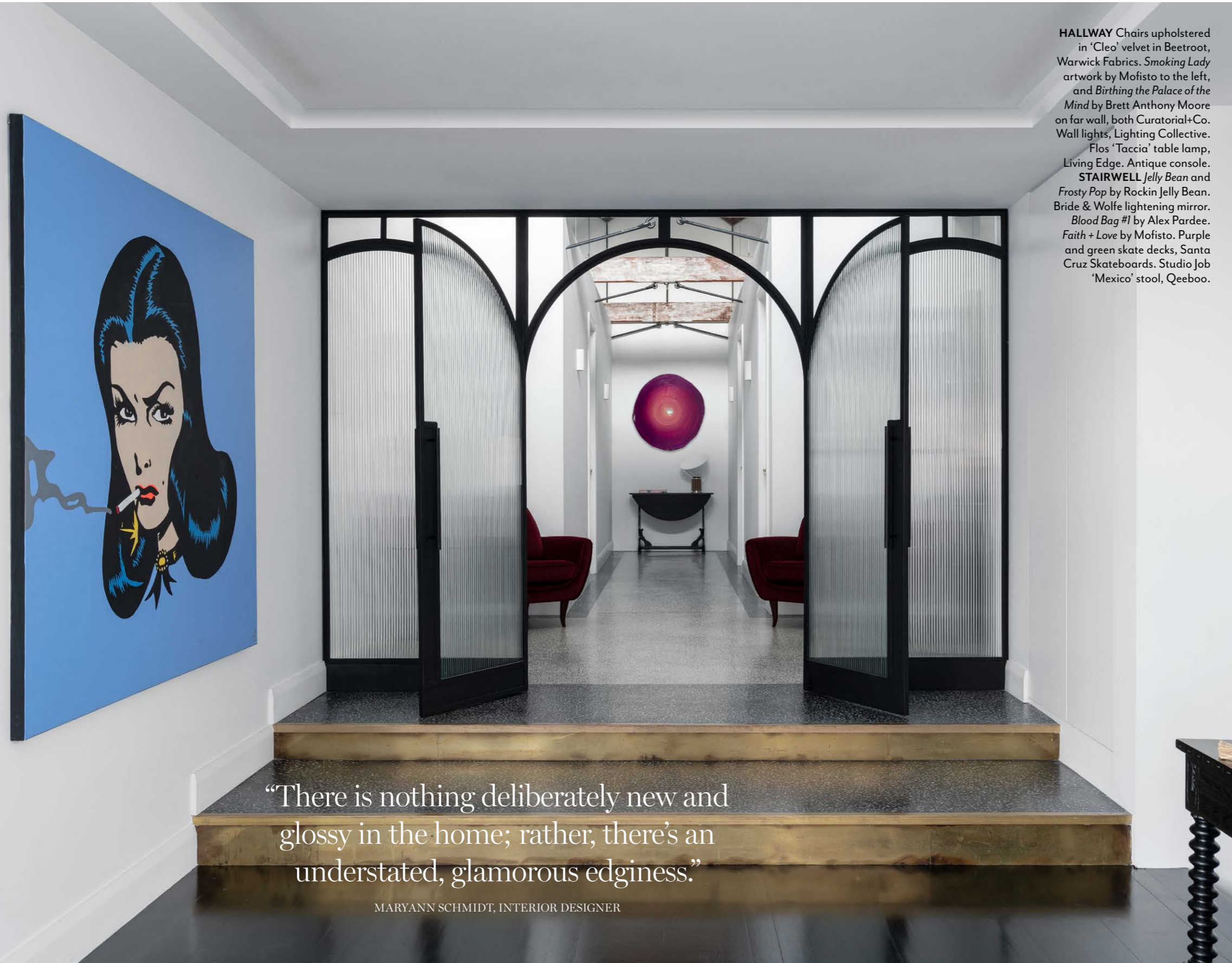
When Maryann saw the building she was instantly on board. “I had a connection and knew I had to be involved,” she says. “We had a shared vision of how we saw the design and it was a perfect start.”

Rowena and Anton wanted to restore the true character of the building’s heritage while giving it an edgy and glamorous update - “New York loft meets Newtown grunge with a French twist,” says Maryann. As well as having been a Salvation Army hall, the circa-1910 property had been the headquarters of a major recording company. The stables, which were built in 1923, were joined to the original building by a 1970s extension. “It has lived many lifetimes and has many stories to tell,” says Maryann. Known as the Citadel in Salvation Army parlance, the moniker has been kept by the family for their business, Citadel Creative.

With her design intent informed by the property’s history, Maryann’s approach was an amalgamation of industrial, Art-Deco and Federation styles. “While staying true to the soul of the building, our vision was to transform the space into a family home reflective of the owners’ aesthetic,” she says. ▶



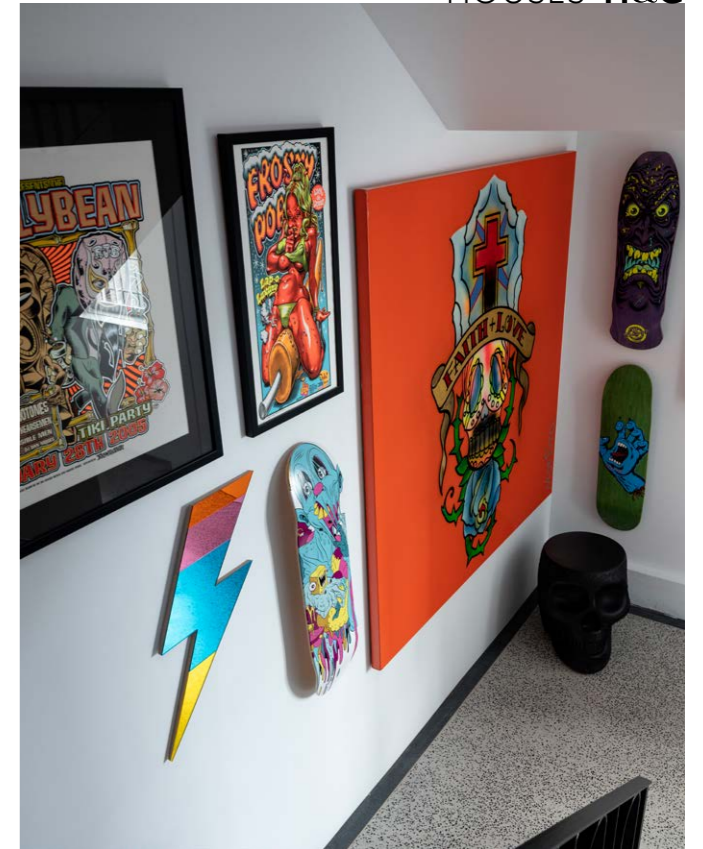
LIVING Coco Republic 'Aspen Channel' sofa and 'Zurich' chair. &Tradition 'Tung' side table, Cult. Florence Broadhurst 'Turnabouts' rug, Unitex. Escea fireplace customised in blackened steel, Stoke. Owners' coffee table and Arne Jacobsen 'Egg' chair. Tom Dixon candelabra. **KITCHEN** ILVE 'Nero Lusso' oven/stove, Winning Appliances. Island, Concrete Art by Luke. Brodware mixer. Sink, Schots. Lo & Co handles. **DINING** 'Benjamin Ripple' oval table, GlobeWest. 'Branchflower' pendant, Giffin Design. **TERRACE** 'Toulon' crazy paving, Surface Gallery. Hommey cushion.



HALLWAY Chairs upholstered in 'Cleo' velvet in Beetroot, Warwick Fabrics. *Smoking Lady* artwork by Mofisto to the left, and *Birthing the Palace of the Mind* by Brett Anthony Moore on far wall, both Curatorial+Co. Wall lights, Lighting Collective. Flos 'Taccia' table lamp, Living Edge. Antique console. **STAIRWELL** *Jelly Bean* and *Frosty Pop* by Rockin Jelly Bean. *Bride & Wolfe* lightening mirror. *Blood Bag #1* by Alex Pardee. *Faith + Love* by Mofisto. Purple and green skate decks, Santa Cruz Skateboards. Studio Job 'Mexico' stool, Qeeboo.

“There is nothing deliberately new and glossy in the home; rather, there’s an understated, glamorous edginess.”

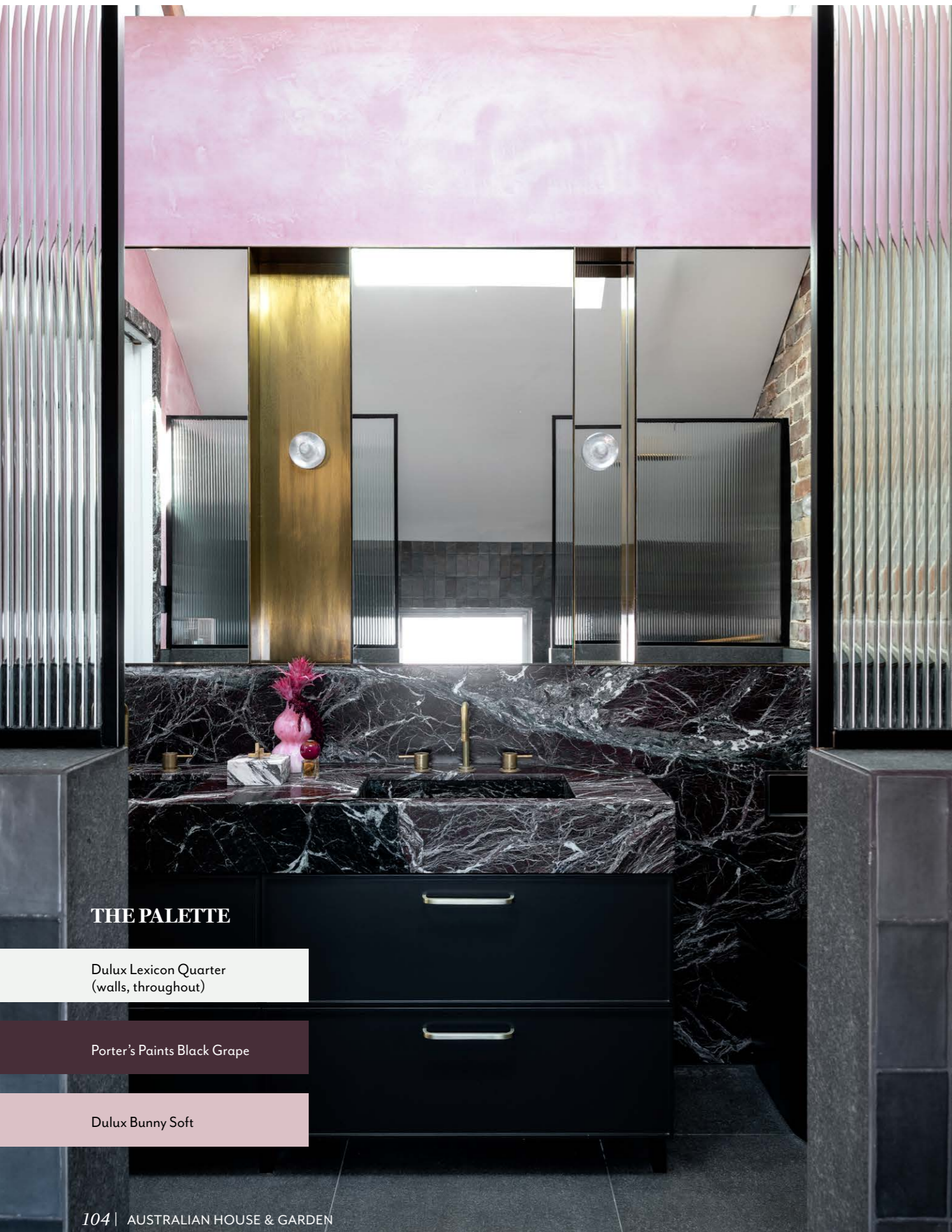
MARYANN SCHMIDT, INTERIOR DESIGNER



Marrying the family’s requirements with a busy co-working space meant a dramatic rethinking of the property. Maryann has devoted the ground floor of the former hall to the work areas, which include a film and photographic studio, edit suite, and meeting and event spaces, adding an entrance on the side that leads to the family’s private areas upstairs. On the first floor, offices at the front of the building are blocked off from the residential space. Located in the old hall and 1970s extension are a main bedroom with ensuite, two additional bedrooms, a bathroom with a steam shower, a laundry and dining area flanked by two outdoor terraces, while the kitchen and living area occupy the former stables.

“Original heritage features laid the foundation for the design brief allowing us to tease out concepts, colour palettes and textures. We coupled the industrial and masculine vibe of old and raw materials in playful contrast to the female softness of colours and layers,” says Maryann.

In the former stables, the old render was removed and the original brickwork became a feature, coupled with the introduction of recycled beams to echo the heritage trusses in the bedroom wing where the original trusses have also become a feature. “This highlights the timber beams, maximises light and space, and adds a sense of drama,” says Maryann. “There is nothing deliberately new and glossy in the home; rather, there’s an understated, glamorous edginess, complemented by the quality of materials and execution of the finishes.” ▶



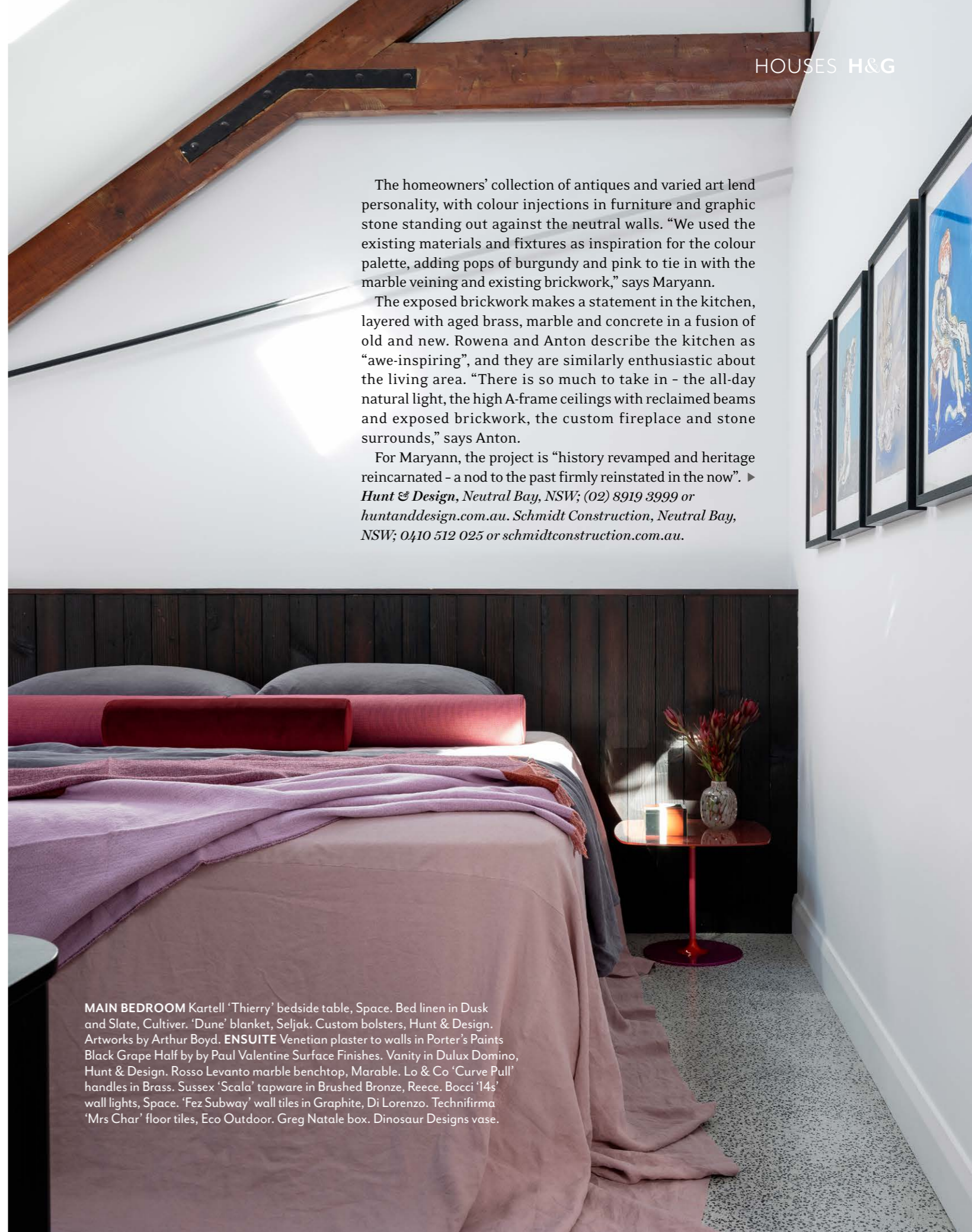
THE PALETTE

Dulux Lexicon Quarter
(walls, throughout)

Porter's Paints Black Grape

Dulux Bunny Soft

Paint colours are reproduced as accurately as printing processes allow.



The homeowners' collection of antiques and varied art lend personality, with colour injections in furniture and graphic stone standing out against the neutral walls. "We used the existing materials and fixtures as inspiration for the colour palette, adding pops of burgundy and pink to tie in with the marble veining and existing brickwork," says Maryann.

The exposed brickwork makes a statement in the kitchen, layered with aged brass, marble and concrete in a fusion of old and new. Rowena and Anton describe the kitchen as "awe-inspiring", and they are similarly enthusiastic about the living area. "There is so much to take in - the all-day natural light, the high A-frame ceilings with reclaimed beams and exposed brickwork, the custom fireplace and stone surrounds," says Anton.

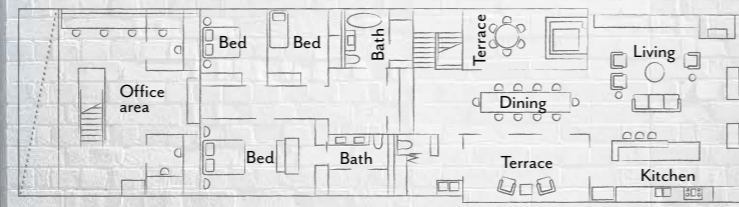
For Maryann, the project is "history revamped and heritage reincarnated - a nod to the past firmly reinstated in the now". ▶ *Hunt & Design, Neutral Bay, NSW; (02) 8919 3999 or huntanddesign.com.au. Schmidt Construction, Neutral Bay, NSW; 0410 512 025 or schmidtconstruction.com.au.*

MAIN BEDROOM Kartell 'Thierry' bedside table, Space. Bed linen in Dusk and Slate, Cultiver. 'Dune' blanket, Seljak. Custom bolsters, Hunt & Design. Artworks by Arthur Boyd. **ENSUITE** Venetian plaster to walls in Porter's Paints Black Grape Half by Paul Valentine Surface Finishes. Vanity in Dulux Domino, Hunt & Design. Rosso Levanto marble benchtop, Marable. Lo & Co 'Curve Pull' handles in Brass. Sussex 'Scala' tapware in Brushed Bronze, Reece. Bocci '14s' wall lights, Space. 'Fez Subway' wall tiles in Graphite, Di Lorenzo. Technifirma 'Mrs Char' floor tiles, Eco Outdoor. Greg Natale box. Dinosaur Designs vase.

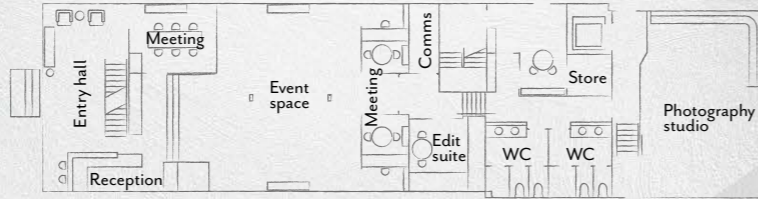
THIS IS THE LIFE

As the entire property is available as a location hire for film and television, it is very photogenic, and Maryann had the creative freedom to “fill it to the brim with gorgeous moments throughout”. But, says Anton, “While the original inspiration was for a very simple, practical and functional space for our business, more importantly, it is a home for ourselves and our beautiful little boy.”

THE LAYOUT



First floor



Ground floor



THE SOURCE

Bronze, curves and splashes of deep plum and crimson give interiors a New York-style sophistication.



Produced by Saffron Sylvester.

1 'Branchflower' custom pendant light, POA, Giffin Design. 2 York 'Brenda' rug (230x160cm) in Black & Gold, \$385, Choices Flooring. 3 Karakter 'Riscio' table lamp, \$860, Cult. 4 *Splitting the Atom of a Social Frenzy* artwork by Brett Anthony Moore, POA, Curatorial+Co. 5 'Gowrie' cushion (50x50cm), \$140, Greg Natale. 6 Milli 'Oria' basin set in PVD Brushed Bronze, \$1014, Reece. 7 Moooi 'Hana' armchair, \$7360, Space. 8 'Ics' stool in Spessart Oak and Stainless Steel Footrest, \$2140, Poliform. 9 'Erin' towel in Maroon & Butter, \$130, Baina. 10 'Aspen Channel' sofa in Black Leather (240x102cm), \$6195, Coco Republic. **H&G**

TERRACE Fearon 'Window' chairs in Pale Eucalypt, Curated Spaces. Artie 'Wave' outdoor table in Sage Speckle, GlobeWest. Italian up-down outdoor wall light, Lighting Collective. 'Toulon' crazy paving, Surface Gallery. 'Roman' towel in Sage & Chalk, Baina.